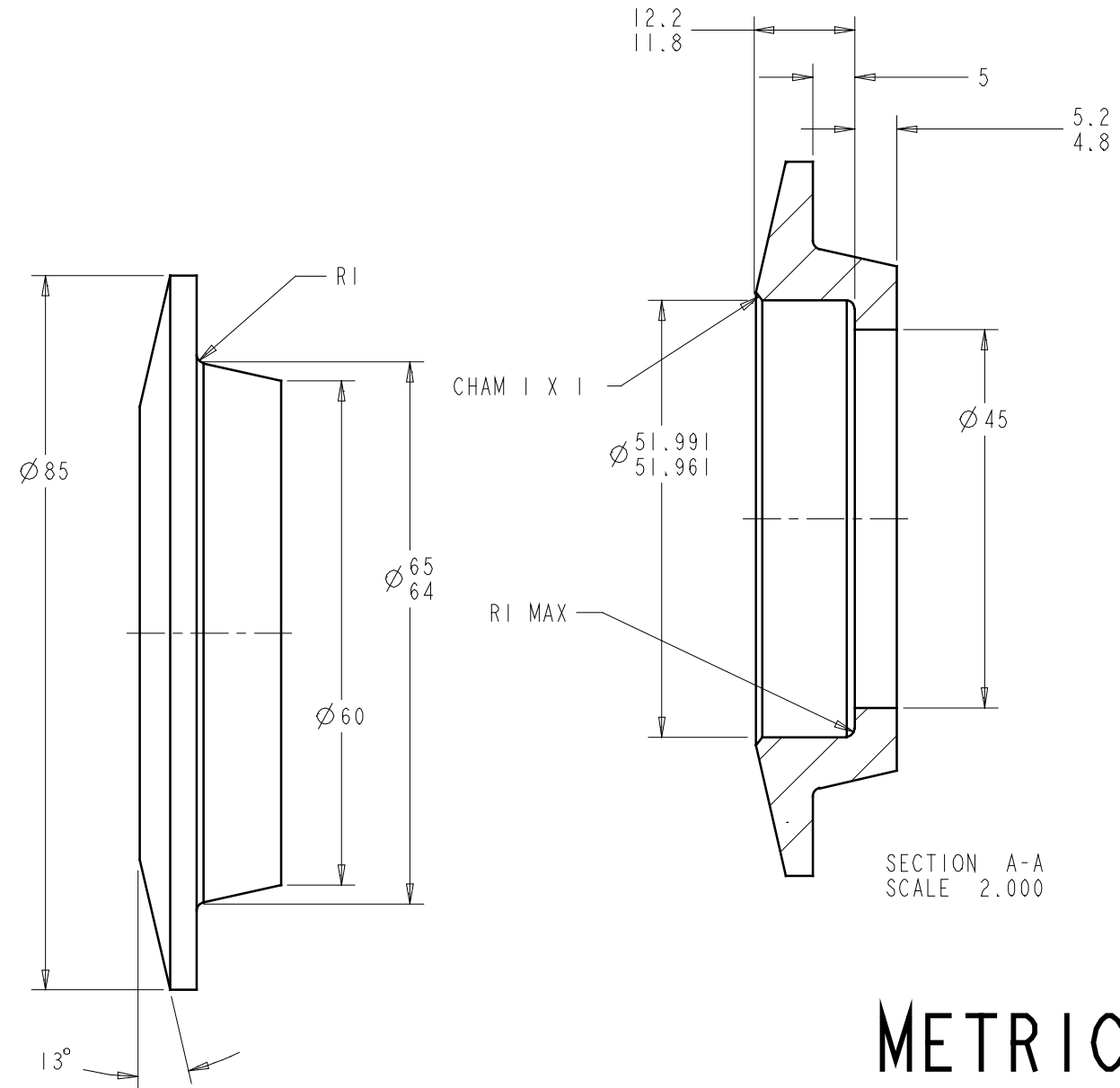
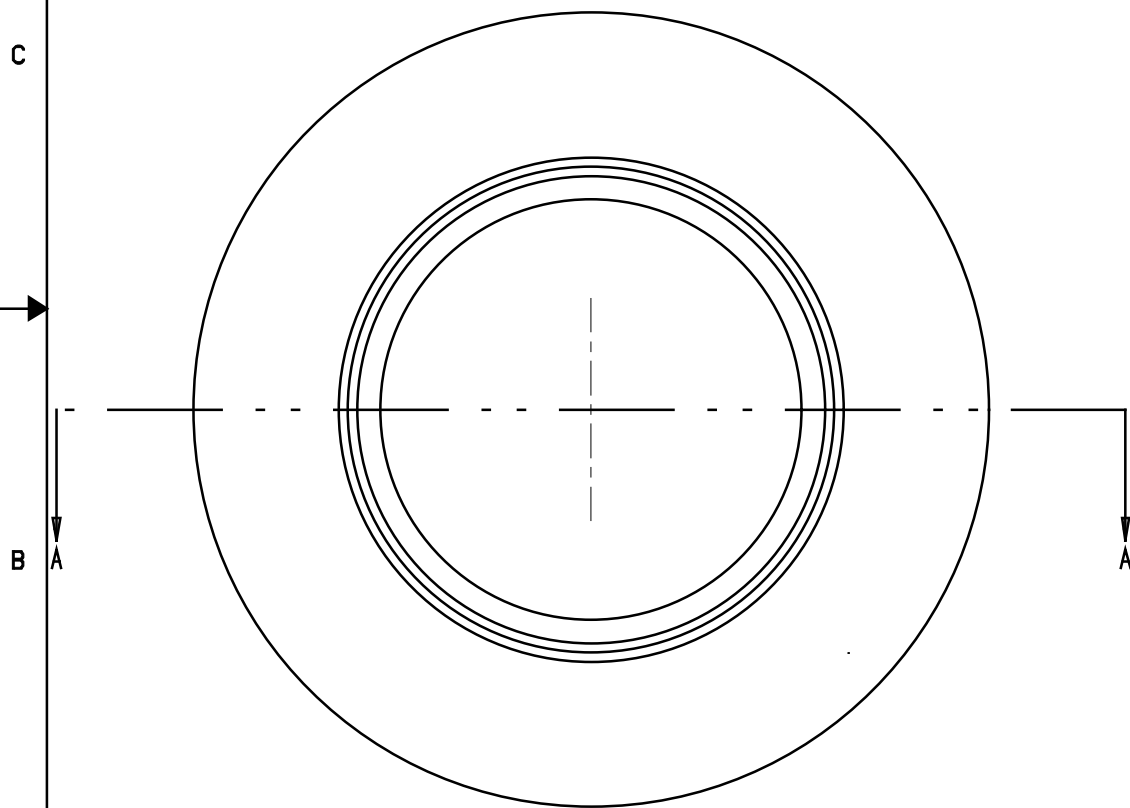


NOTES:

1. APPLICABLE STANDARDS/SPECIFICATIONS:
A. ASME Y14.5M-1994
2. MATERIAL: ALUMINUM ALLOY, ASTM B211, GRADE 6061
TYPE T6, BAR, ROLLED, COLD FINISHED
3. ASTM E380 APPLIES. METHOD B SHALL BE
USED IN CONVERTING AND ROUNDING OFF.
1 INCH = 25.4mm APPLIES.
4. BREAK ALL SHARP EDGES
5. FINISH: ANODIZE IAW MIL-A-8625F
TYPE 2, CLASS 2. COLOR BLACK
6. ALL DIMENSIONS BEFORE COATING

MODEL REV	DRAWING REV	DESCRIPTION	DATE(YEAR-MO-DA)
A	A	ANODIZING SPEC CHANGED, NOTE 6 ADDED Ø:64.5 DIM WAS Ø64.0, NAME CHANGED	2004-2-18



METRIC

LIMITED RIGHTS STATEMENT:

- A. THIS DRAWING CONTAINS PROPRIETARY AND CONFIDENTIAL INFORMATION OF MOTORFORCE ENGINEERING LLC, KATY, TEXAS, AND IS LOANED IN CONFIDENCE WITH THE UNDERSTANDING THAT IT WILL NOT BE REPRODUCED NOR USED FOR ANY PURPOSE EXCEPT THAT FOR WHICH IT IS LOANED AND IT SHALL BE RETURNED ON DEMAND.
- B. THIS NOTICE SHALL BE MARKED ON ANY REPRODUCTION OF THESE DATA, IN WHOLE OR IN PART.

DO NOT SCALE DRAWING		MFE MotorForce Engineering LLC 2810 Patna Dr. Katy, TX 77493 (281) 391-4958	UPPER SPRING PERCH 2.5"	
UNLESS OTHERWISE SPECIFIED DIMENSIONS ARE IN MILLIMETERS			REGULAR STRUT	
TOLERANCES ON ANGLES ± 1° 0 PLACE DECIMALS ± 0.5 1 PLACE DECIMALS ± 0.1		BMW E36 UPPER MOUNT		
THIRD ANGLE PROJECTION		SIZE	DWG NO	
		C	1036002-03	
DRAWN BY	DATE(YEAR-MO-DA)	SCALE	UNIT WT.	SHEET
MATTEUCCI	2003-11-16	2.000	0.001	1 OF 1
CHECKER	ENGINEER			
	MATTEUCCI			